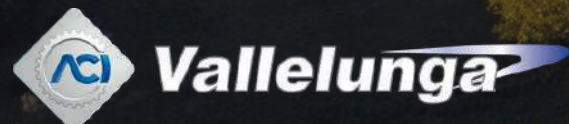


AUTODROMO "PIERO TARUFFI" VALLELUNGA

FACILITIES & TECH SHEET



eng a global experience

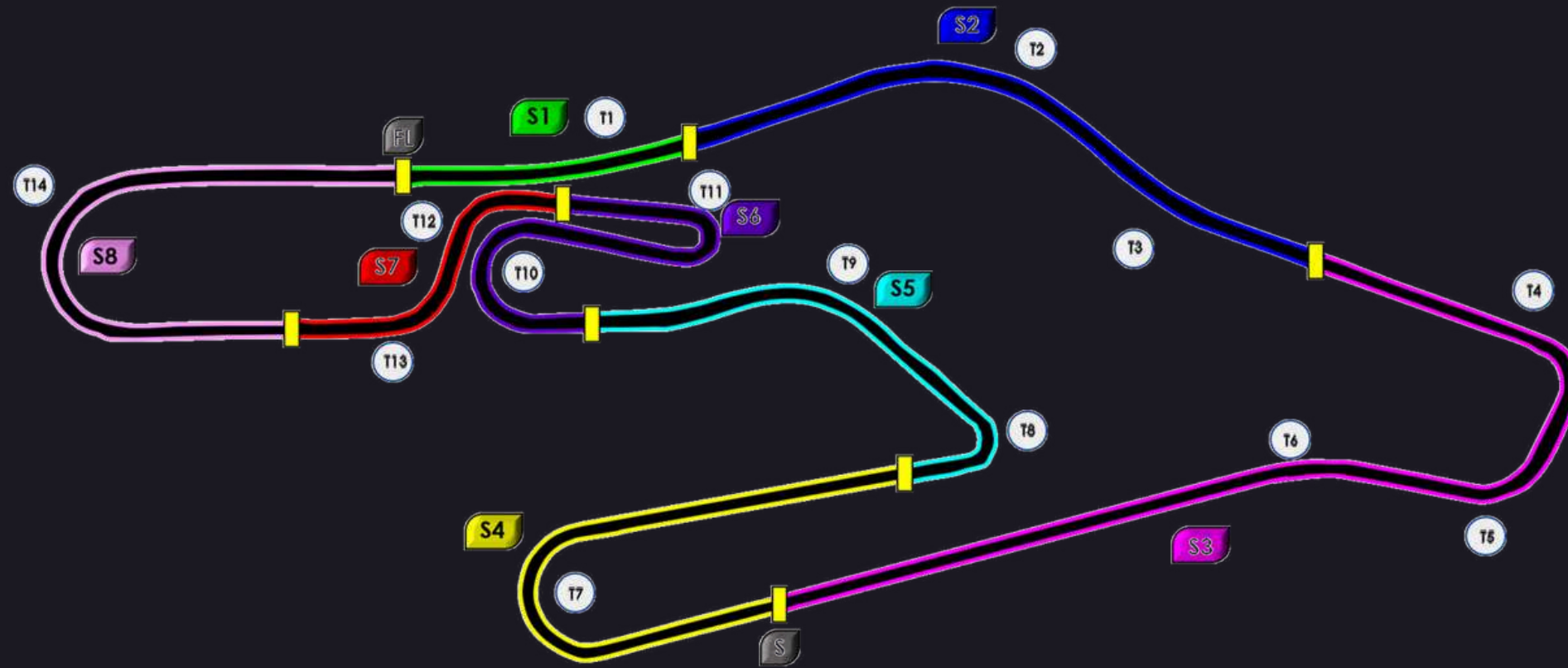


VALLELUNGA:

- INTERNATIONAL RACETRACK
- SAFE DRIVING CENTRE
- "ENELXWAY" CONGRESS CENTRE
- OFF-ROAD AND RALLY AREAS

OUR RACETRACK

GENERAL INFO

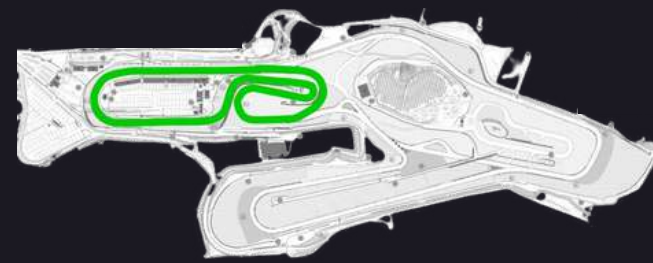


- Circuit length auto 4.085,01 m
- Circuit length moto 4.100 m
- Direction clockwise
- Minimum width 10,5 mt
- Maximum width 14 mt
- N° of turns 14 (7 left - 7 right)
- Minimum bending radius 16,2 mt (T11)
- Maximum bending radius 247,70 mt (T2)
- Total straights 2.332,56 mt
- Total curved sections 1.752,44 mt
- Maximum slope 2,32%
- Total climb 16,22 mt
- Maximum length straight 547,22 mt
- Permanent CCTV system 31 cameras (10 swivelling)
- Fiber and customisable internet network

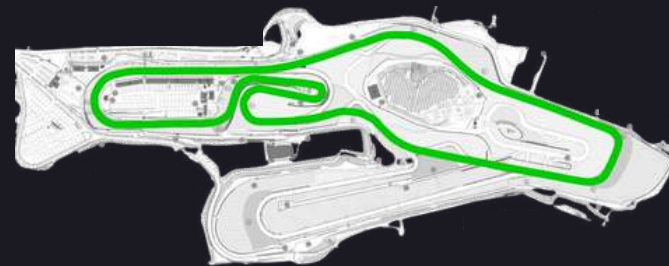
OUR RACETRACK

ALTERNATIVE LAYOUTS

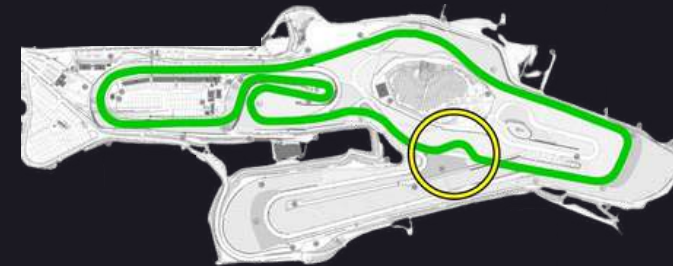
LAYOUT 1.7 KM 



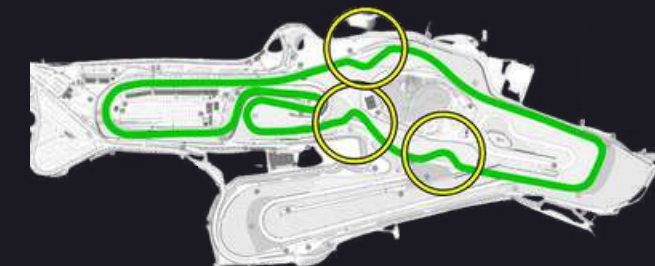
LAYOUT 3.2 KM 



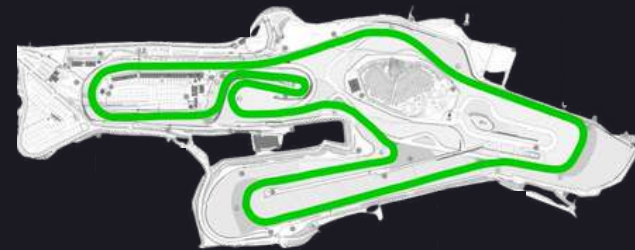
LAYOUT 3.2 KM 
+ 1 CHICANE



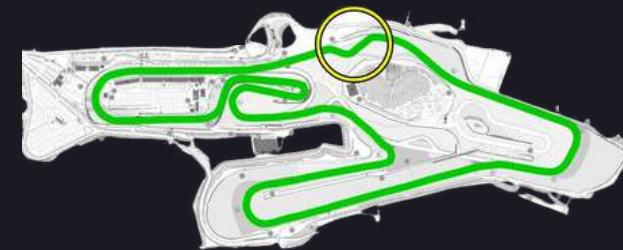
LAYOUT 3.2 KM 
+ 3 CHICANES



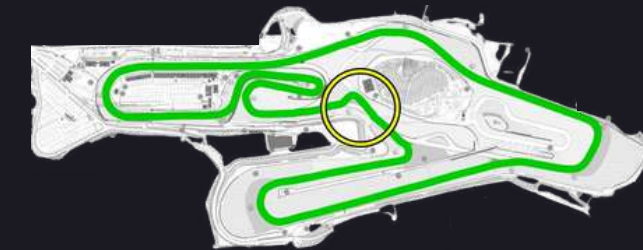
LAYOUT 4.08 KM



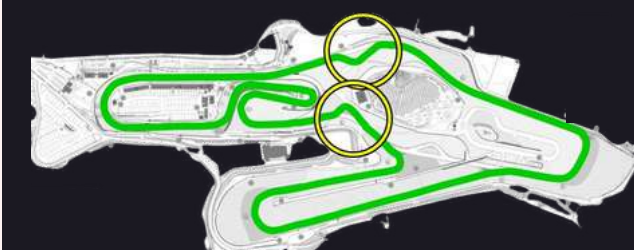
LAYOUT 4.08 KM 
+ 1 CHICANE



LAYOUT 4.08 KM 
+ MOTORBIKE CHICANE

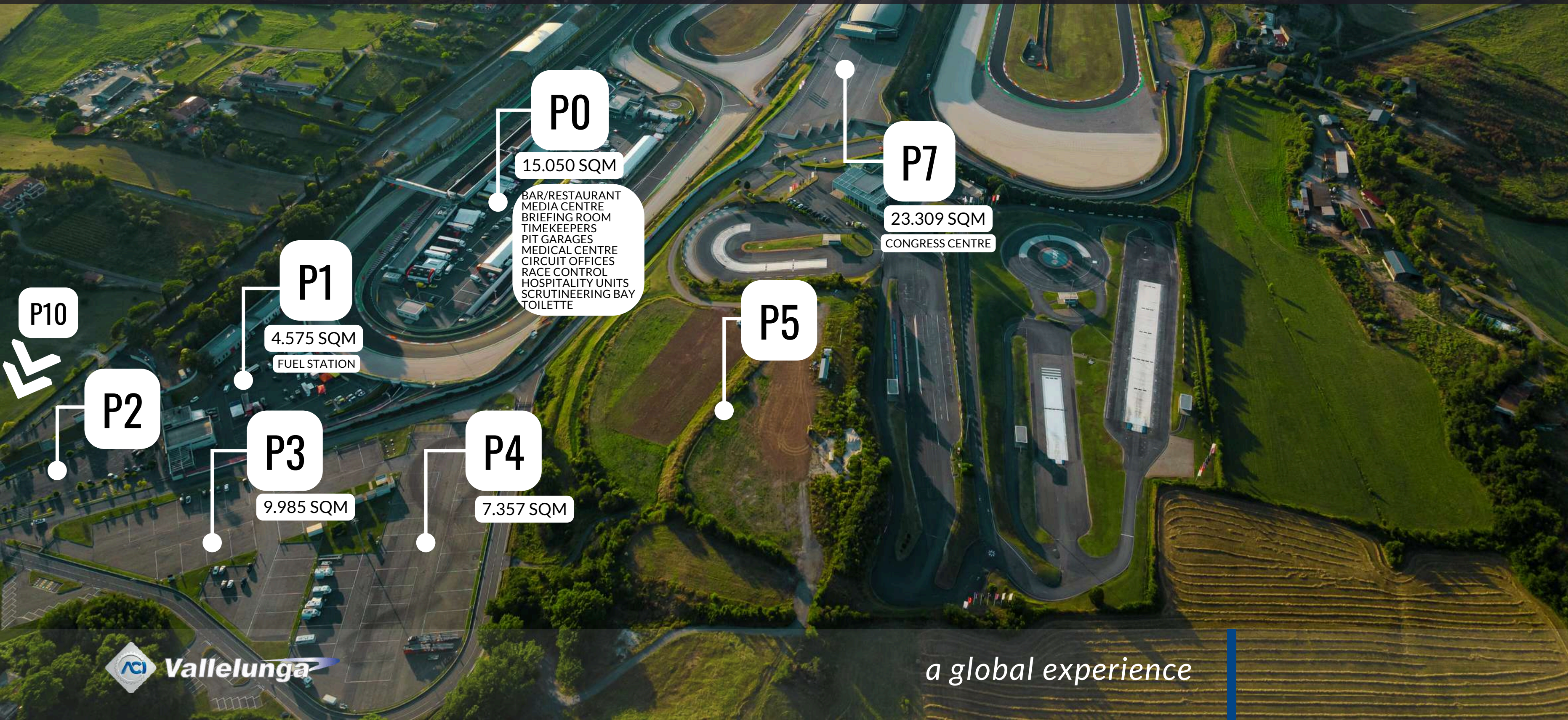


LAYOUT 4.08 KM 
+ 1 CHICANE &
MOTORBIKE CHICANE



 TO BE REQUESTED AND PREVIOUS SETUP

PADDOCK & PARKING AREAS



HOSPITALITY UNIT & SERVICES

CIRCUIT OFFICES
MEDIA CENTRE
HOSPITALITY UNITS

ACI GLOBAL TOWER
HOSPITALITY UNITS
BAR/RESTAURANT

SERVICE BUILDING
MEDICAL CENTRE
PODIUM
HOSPITALITY UNIT

CONGRESS
CENTRE


SAFE
DRIVING
CENTRE


OFF-ROAD


PDK 0


PILLARS TECH INFO




 n.1 32A (3+N+T)
 n.1 16A (3+N+T)
 n.4 16A (mono)
 tv signal + water


 n.2 32A (3+N+T)
 n.2 16A (3+N+T)
 n.8 16A (mono)
 water


 n.1 32A (3+N+T)
 n.1 16A (3+N+T)
 n.2 16A (mono)
 tv signal

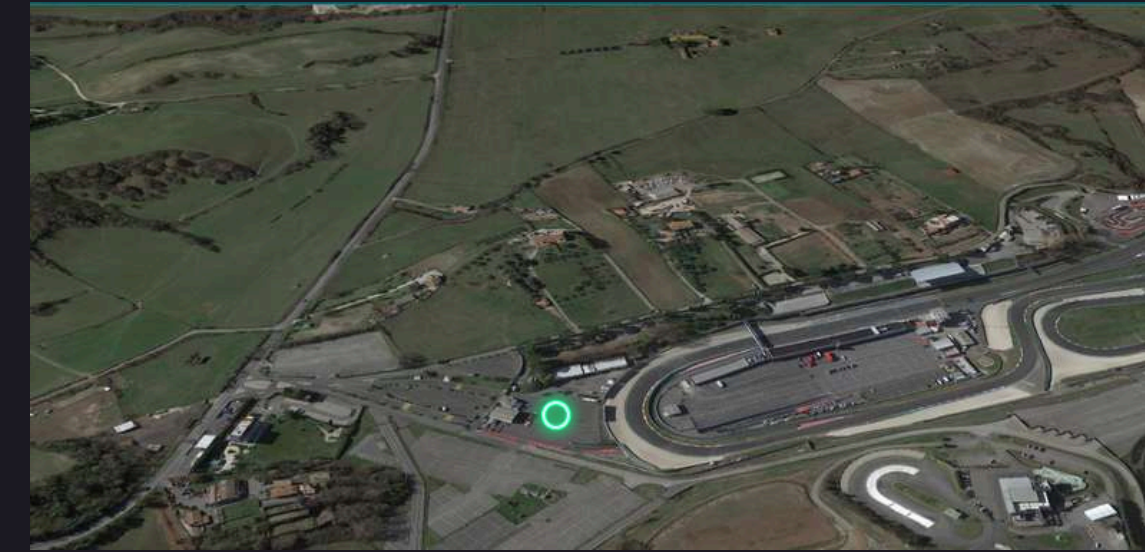

 n.1 32A (3+N+T)
 n.1 16A (3+N+T)
 n.2 16A (mono)
 tv signal + water

FUEL STATION

A self service fuel station is available close to the main entrance.

Unleaded gasoline 101 RON
Diesel

Cash, debit or credit card



Caratteristiche	Unità di misura	Analisi	Specifiche		Metodo
			Valore minimo	Valore massimo	
Colore		Chiaro			
Densità a 15°C	Kg/m3	747,6	720	775	EN ISO 12185
NORM	-	>100,5	98,0		PREN 25164
NOMM	-	86,2	85,0		PREN 25163
Distillazione:					
- Evaporato a 100 °C	% v	59	46	71	EN ISO 3405
- Evaporato a 150 °C	%v	91	75		
Zolfo totale	mg/Kg	4,1		10	EN ISO-8754
Piombo totale	g/L	<0,002		0,005	PREN 237
Benzene	% v/v	0,7		1,0	EN 12517
Aromatici	% v/v	29,8		35,0	EN 14517
Olefine	% v/v	13,8		18	EN 14517
TVR	KPa	83,8	50	80	EN 13016
Ossigeno	% m/m	<2,7		2,7	EN 13132

Prodotto conforme alla normativa UNI EN 228/2013

Additivato con multifunzione per migliorare la qualità: Riduzione Attriti all'interno del motore, Numero di Ottano, Proprietà Detergenti e Anticorrosive e Riduzione delle Emissioni.



WE ARE "ELECTRIFIED"

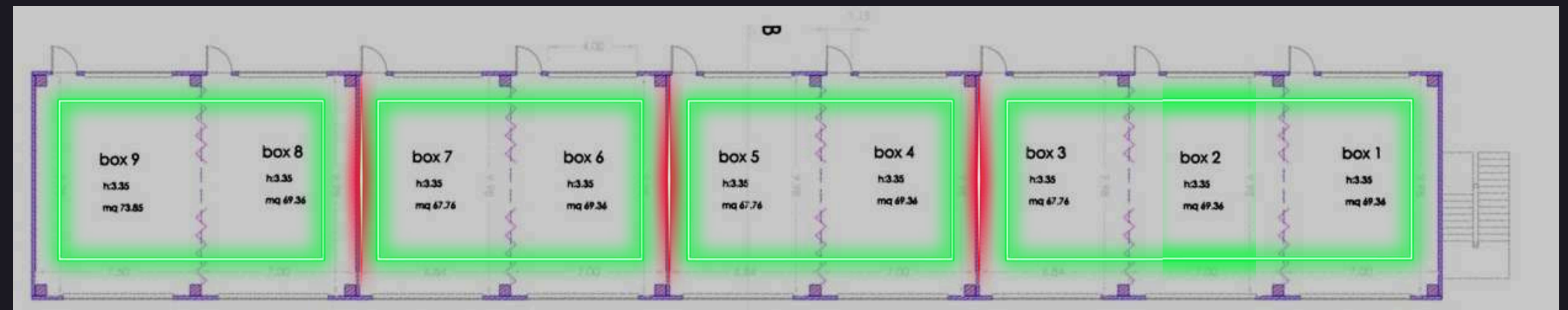
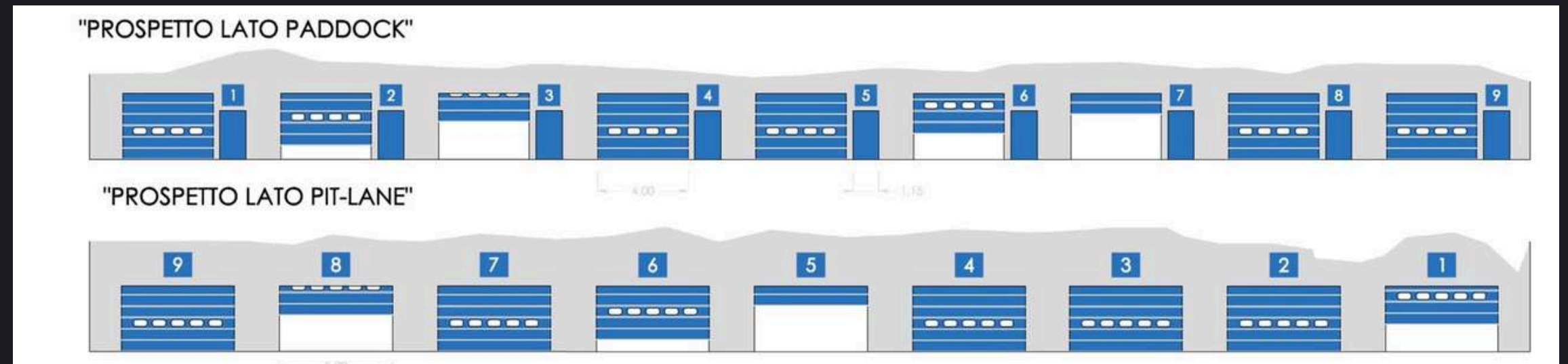
We have fast charging pillars and Juice Pump, in the main paddock, safe driving centre and congress centre



- ◻ Pole 3G – 22 Kw
- ◻ Pole 3G – 44 Kw
- ◻ Juice Pump 2x120Kw
- ◻ Pit Garages High Voltage
- ◻ 2 HPC x150



PIT GARAGES 1-9



TECH DATA

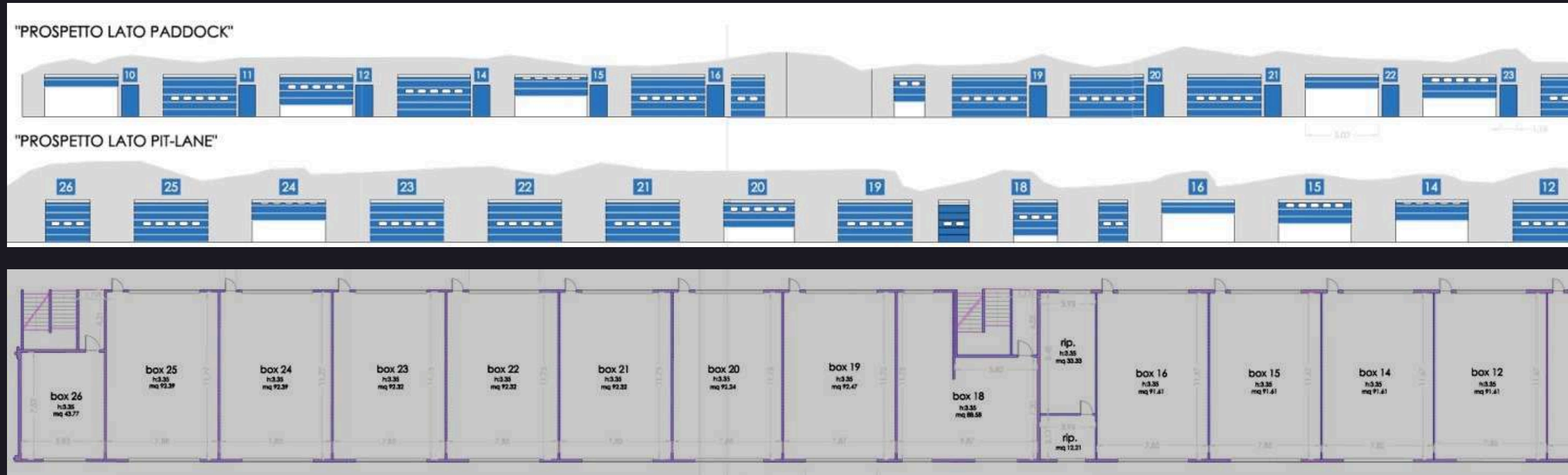
joinable box:

- 1-2-3
- 4-5
- 6-7
- 8-9

- 70 sqm each one
- 115 cm paddock side door width
- 400 cm paddock side shutter width
- 500 cm pit lane side shutter width

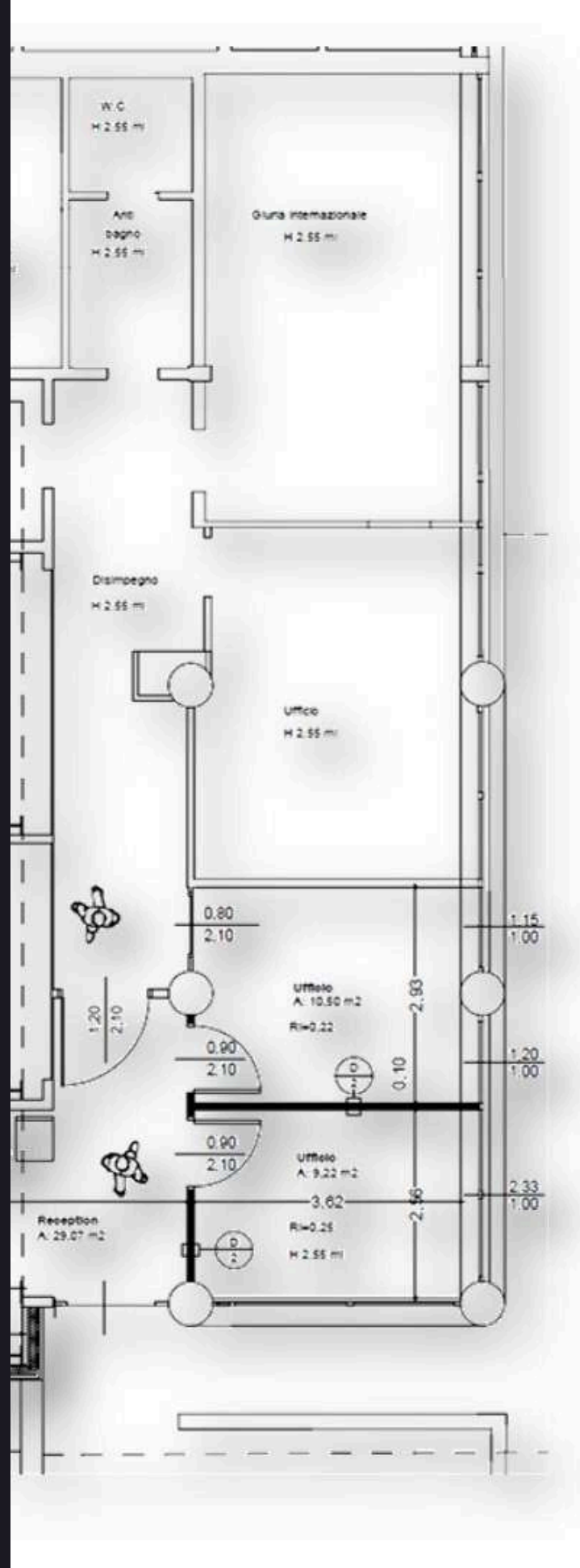
- electrical connections for each box, max 63A
- 2 blocks with 1 sock 2P + T 16A and 1 sock 3P + N + T 32A
- 2 blocks with 1 sock 2P + T 32A and 1 sock 3P + N + T 32A

PIT GARAGES 10-26



TECH DATA

- box from 10 to 16: 100 sqm
- box from 19 to 25: 100 sqm
- box 18: 70 sqm
- box 26: 50 sqm
- 115 cm paddock side door width
- 400 cm paddock side shutter width
- 500 cm pit lane side shutter width
- box n.26 has not paddock side shutter but only pedestrian door
- electrical connections for each box, max 63A
- 4 blocks with 1 sock 2P + T 16A and 1 sock 3P + N + T 32A
- pit garages n° 12 - 14 - 15 - 16 are provided with a dedicate juice pump by EnelXWay



ACI GLOBAL TOWER

MEETING ROOMS - GROUND FLOOR

At the groundfloor of the Aci Global Tower is located the Race Control Room and in addition a front office/reception, 2 meeting rooms and 2 offices.

Each meeting room and office is provided by 3 tv connected with cctv system, timekeeping service pages and digital tv

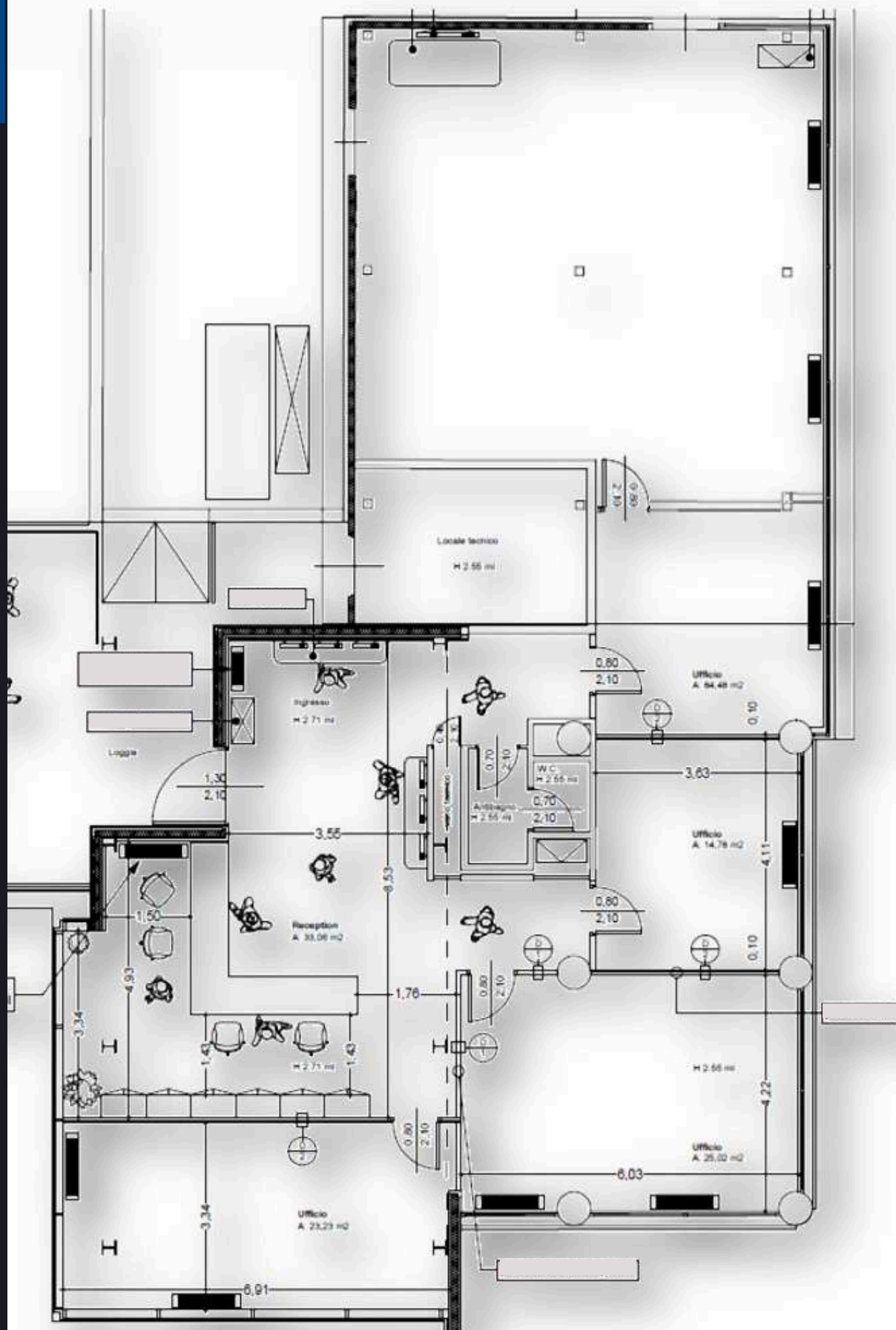
ACI GLOBAL TOWER

MEETING ROOMS - 1ST FLOOR

At the 1st floor of the Aci Global Tower are located:

- Lamborghini Lounge
- 4 offices
- front office/reception

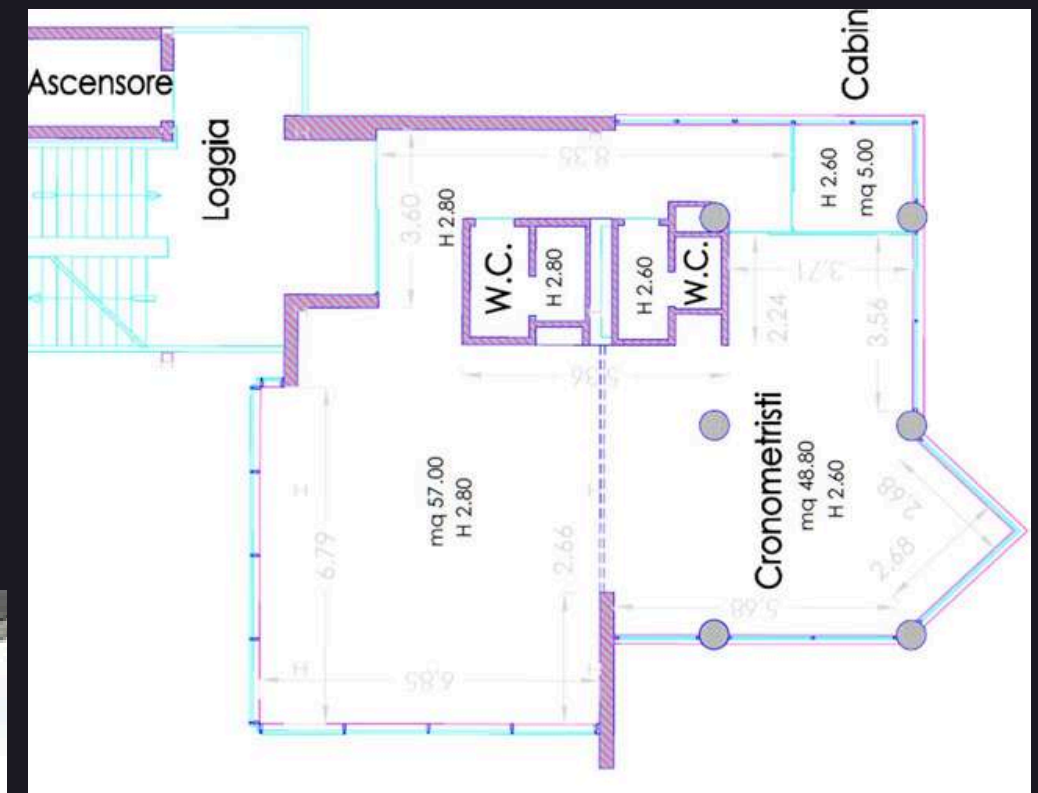
Each office is provided by 3 tv connected with cctv system, timekeeping service pages and digital tv

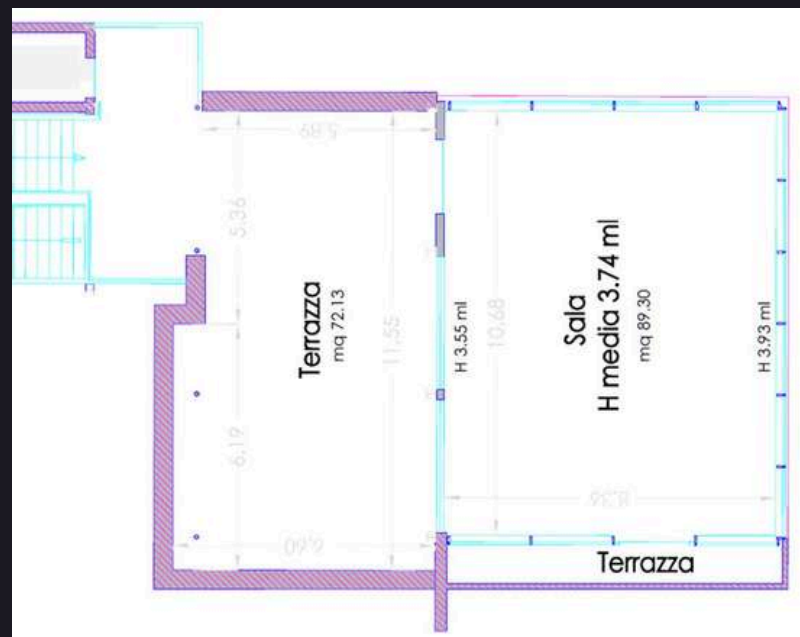


ACI GLOBAL TOWER - 2ND FLOOR

At the 2nd floor of the Aci Global Tower are located:

- timekeepers office
- hospitality unit (57 sqm)





ACI GLOBAL TOWER - 3RD FLOOR

At the 3rd floor of the Aci Global Tower is located a panoramic hospitality unit (90 sqm) with a dedicate terrace (73 sqm)

MEDIA CENTRE

1ST FLOOR UP BOX N.26

PIT GARAGE BUILDING



The Media Centre (280 sqm) is located at the first floor of pit garage building. It's equipped with 3 projectors and 24 tv plus dedicated sound system and a dedicated office for the internal media.

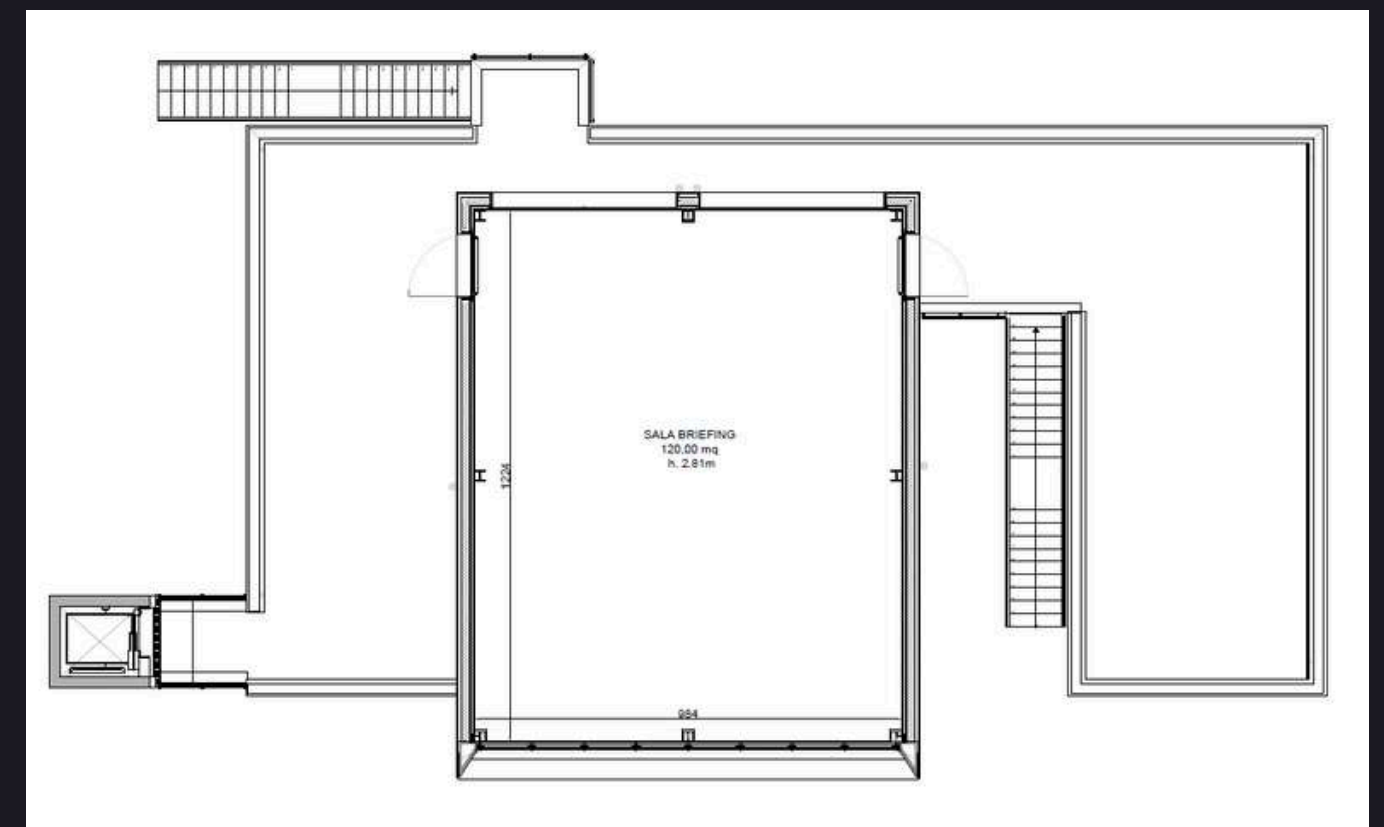




HOSPITALITY UNIT

1ST FLOOR SERVICE BUILDING

A panoramic hospitality unit - about 100 sqm - with a dedicated terrace with a view on track and on paddock



HOSPITALITY UNITS

1ST FLOOR PIT GARAGE BUILDING

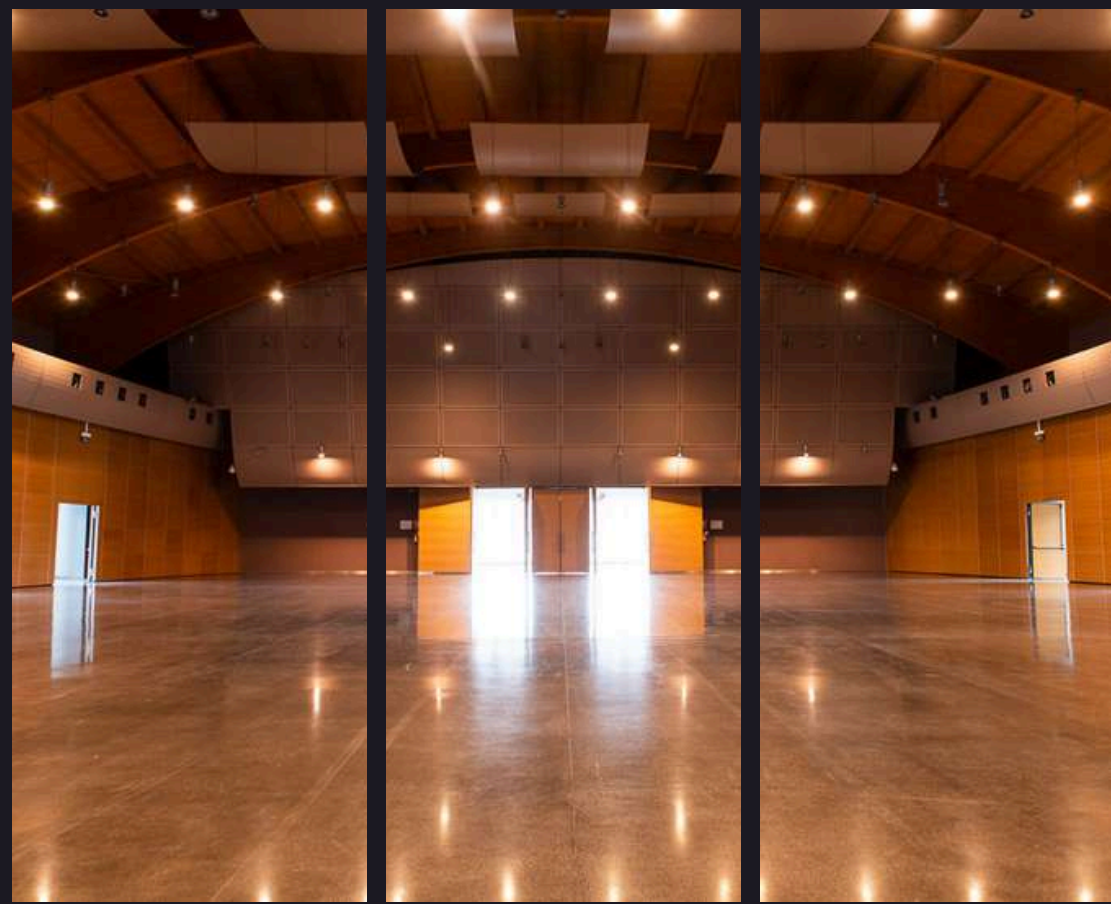
At the 1st floor of the pit garage building we have few hospitality units and/or meeting rooms



CONGRESS CENTRE

NOT ONLY MOTORSPORT

 **Vallelunga**
Centro Congressi

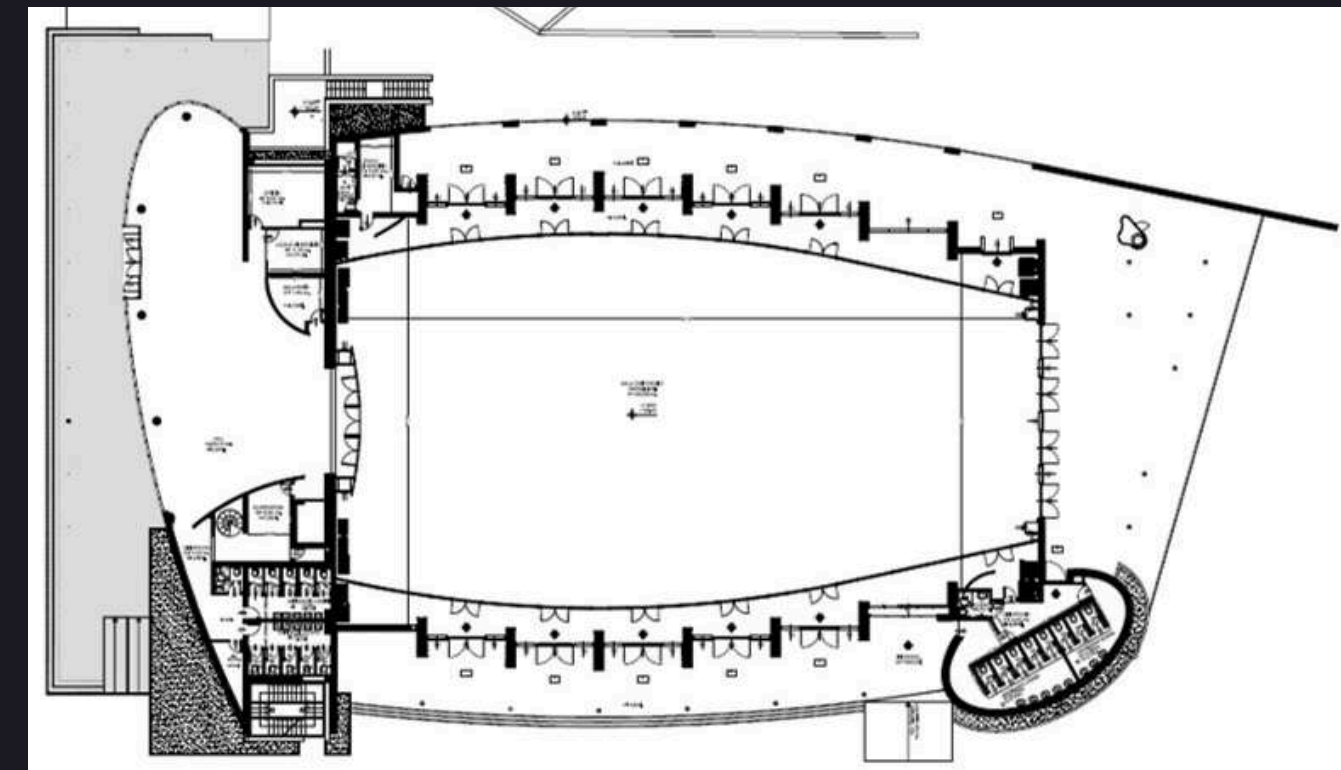
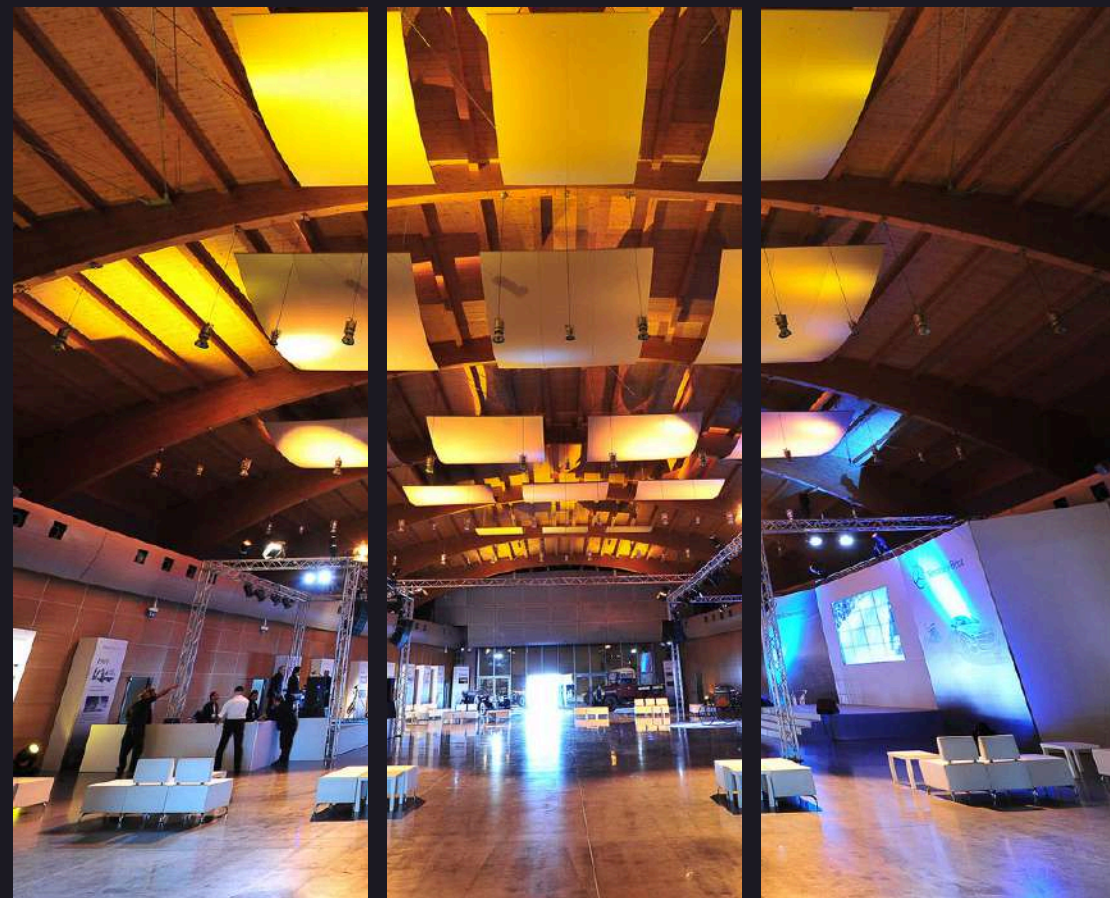


Measurement: 1.300 sqm
 Max capacity: 1.600 pax
 Length: 47.67 mt
 Width max: 27.70 mt
 Width min: 22.84 mt
 Height: 10 mt
 Foyer: 285 sqm
 Storage: 400 sqm
 Parking: 1.400 cars
 Outdoor area: 13.000 sqm

Secretary office
 Meeting-room
 Wardrobe
 Control room
 Catering area
 Driveway for cars and trucks
 Restroom and toilette

MORE THAN...

TECH DATA



SAFE DRIVING CENTRE

INNOVATION & TECHNOLOGIES FOR ROAD SAFETY

TEACHING BY INNOVATING

SAFETY FIRST

The Vallelunga Safe Driving Center is spread over 5 operating areas, in which they can be reproduced all driving situations.

The center is equipped with:

- Low adhesion surfaces
- Asphalt surfaces
- Irrigation systems
- Ascent / descent area (asphalt / resin low adherence)
- Slide-machine
- Rectilinear areas maximum length ca.170 mt





NOT ONLY ASPHALT

LIVING THE AUTOMOTIVE ENVIRONMENT AT 360°



MUD & GRAVEL

The area it is an excellent setting Off Road for off-road events, for the presentation of vehicles and the training of the personnel assigned use of off-road vehicles.

The following can be carried out in the area exercises:

- Ups and downs
- Light trails on dirt roads
- Twist
- Guide on funds with poor adherence
- Overcoming obstacles
- Bumps and holes

FROM BIG TO SMALL

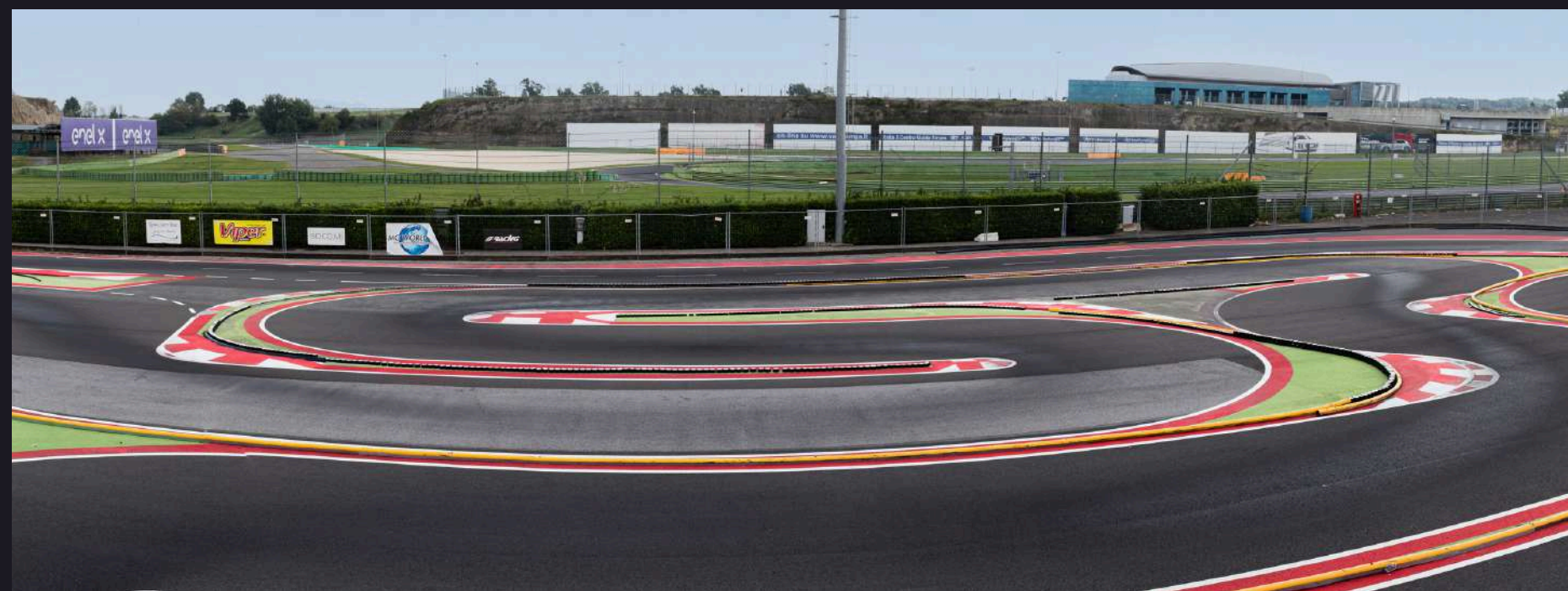
SMALL RACING CARS
BIG EMOTIONS

RACETRACK FOR RC CARS

PASSION IN ALL ITS FORMS

An approved circuit, reserved for rc modeling, complete with facilities for assistance and timing.

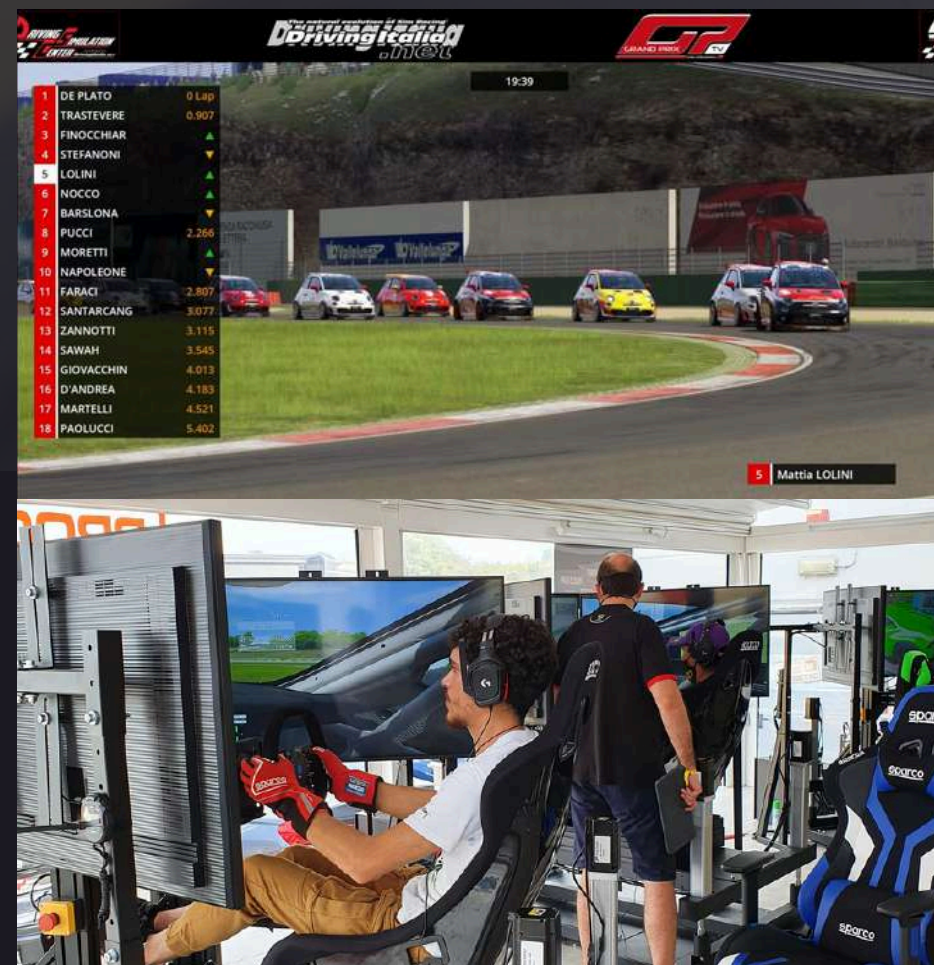
- Length 330 mt
- Clockwise direction
- Maximum width 5 mt
- Minimum width 4.5 mt
- Number of right turns 6
- Number of left turns 8
- Night lighting



WE ARE MORE THAN JUST A CIRCUIT



ROMA BIKE PARK
the cycling world on
and off road



DRIVING SIMULATION CENTRE
a professional and exciting system to
learn



GENERAL SERVICES
Tires services, Restaurant,
Shops, Emotional laps
and much more

ONE OF OUR BEST PLUS

THE ETERNAL CITY





ETERNAL CITY, REGIONE LAZIO & VISIT LAZIO A PERFECT INTEGRATED MIX

- Just 30 min from Rome City Centre by highway
- 2 International Airports in 60 Kms
(Ciampino and Fiumicino)
- 1 Airport for private fly in 40 Kms
(Urbe - VFR flight jet max weight at take off 5.700 Kg max 10 passengers. Antifire category ICAO Cat.2)
- Easy and high level hotel accomodations
- Nice weather conditions



- Chance for events and dinners at exclusive external locations
- Organization of private visits to Rome's monuments
- Support for travels and accommodation
- Cooperation with the local authority for activities and/or events in Rome city centre

But not only Rome! All of Lazio with its landscapes full of history and culture and its gastronomic heritage offers unique moments to experience



a global experience

WE TAKE CARE

OF...



QUALITY, SUSTAINABILITY & SAFETY

Member of CISQ Federation



CERTIFIED MANAGEMENT SYSTEM

ISO 9001

QUALITY

Member of CISQ Federation



CERTIFIED MANAGEMENT SYSTEM

ISO 20121

SUSTAINABILITY

Member of CISQ Federation



CERTIFIED MANAGEMENT SYSTEM

ISO 45001

SAFETY



FIA 3 STARS

ENVIRONMENTAL ACCREDITATION

CONTACTS

FRANCESCO CASSIOLI

Circuit Commercial Responsible and Activity Coordinator
+39.06.90.15.50.68
+39.366.66.30.151
cassioli@vallelunga.it

ALESSIA ANGELILLO

Circuit Commercial and Secretary Office
+39.06.90.15.50.51
angelillo@vallelunga.it

MARIA LUISA DE LUCA

Circuit Commercial and Secretary Office
+39.06.90.15.50.51
deluca@vallelunga.it

FABIO SEVERINI

Digital Marketing & Communication Specialist
+39.06.90.15.50.61 / .74
+39.345.79.71.933
severini@vallelunga.it

GIANFRANCO BONIFACIO

Technical Office Responsible
+39.06.90.15.50.14
+39.335.52.07.450
bonifacio@vallelunga.it

ALESSANDRO CICCIA

Technical Area Planning / Safety & Quality
+39.06.90.15.50.15
+39.345.66.52.681
ciccia@vallelunga.it

FRANCESCO BOZZO

Administration Office Responsible
+39.06.90.15.50.41
bozzo@vallelunga.it

DINO ALDO LODOLA

Sport office
+39.06.90.15.50.69
+39.337.13.80.672
lodola@vallelunga.it

VALLELUNGA



ACI VALLELUNGA SPA

Via Mola Maggiorana, 4
00063 - Campagnano di Roma (RM)



+39.06.90.15.50.1



AUTODROMO@VALLELUNGA.IT



DOWNLOAD

CLICK OR FRAME TO DOWNLOAD ALL DWG; PDF; ON BOARD LAP VIDEO AND PICS

CLICK



FRAME

